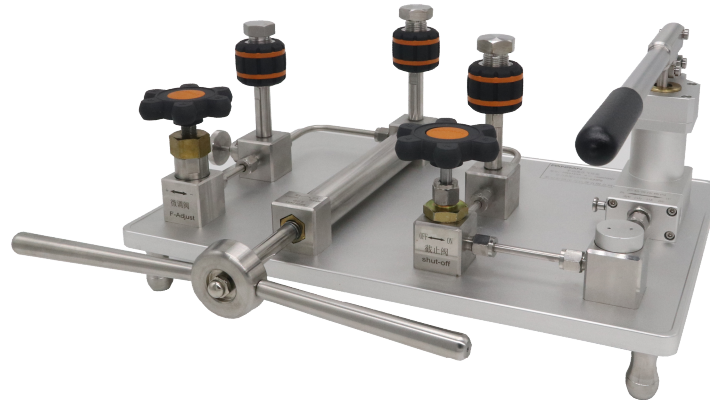


PR914X Series High Pressure Pump



PR9143A Manual High-pressure Pneumatic Pump

The new high-pressure pneumatic pressure pump features easy operation, extensive in pressure regulation range, smooth in pressure boost and reduction, and labor-saving. The secondary pressure regulating pump adopts a unique design, making pressurization more labor-saving. The system increases the oil and gas separation device to avoid oil clogging the one-way valve and prolong the service life of the equipment.



PANRAN instruments are available in South Africa from Intercal (Pty) Ltd

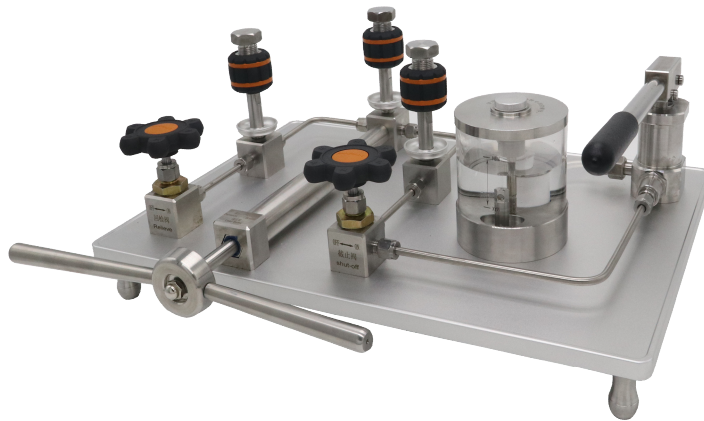
sales@intercal.co.za

www.intercal.co.za

+27 11 315 432

PR9143B Manual High-pressure Pneumatic Pump

Adopts two-stage rapid pre-pressurization and pressure boosting adjustment, with a highly integrated all-in-one design. A quick sewage discharge and cleaning interface is designed on the bottom surface. It features a simple structure, high reliability, easy operation and maintenance, and low leakage tendency. The pressure boosting adjustment adopts a unique design, enabling easy adjustment to the pressure required by users. It has a wide pressure adjustment range and ensures stable pressure boost and reduction.

**PR9144A/B Manual High-pressure Hydraulic Oil Pump**

This product adopts 304 full-stainless steel components, featuring high reliability, easy operation and maintenance, and low leakage tendency. Equipped with a customized filter, it ensures the cleanliness of the medium in the pipeline, reducing issues such as clogging and failure to build pressure. The product has a wide pressure adjustment range, with stable pressure boost and reduction and labor-saving operation.

**PR9144C Manual High-pressure Hydraulic Oil Pump**

This product abandons the traditional one-way valve structural design, making the pipeline less prone to clogging. Meanwhile, it adopts a special sealing method with high pressure resistance, enabling it to achieve very high pressure. Additionally, this product can generate a vacuum degree of -80kPa and is capable of calibrating vacuum pressure instruments.

**PR9145A/B Manual High-pressure Hydraulic Water Pump**

This product adopts 316L full-stainless steel components, featuring high reliability, easy operation and maintenance, and low leakage tendency. Equipped with a customized filter, it ensures the cleanliness of the medium in the pipeline, reducing issues such as clogging and failure to build pressure. The product has a wide pressure adjustment range, with stable

PANRAN instruments are available in South Africa from Intercal (Pty) Ltd

sales@intercal.co.za

www.intercal.co.za

+27 11 315 432

pressure boost and reduction and labor-saving operation.

● **Technical Parameter**

| Item | Manual High-pressure Pneumatic Pump | Manual High-pressure Pneumatic Pump | Manual High-pressure Hydraulic Oil Pump | Manual High-pressure Hydraulic Oil Pump | Manual High-pressure Hydraulic Water Pump |
|-----------------------------|-------------------------------------|-------------------------------------|---|---|---|
| Pressure Range ^① | PR9143A (-0.095~6)MPa | PR9143B (-0.095~16)MPa | PR9144A (0~60)MPa PR9144B (0~100)MPa | PR9144C (-0.08~280)MPa | PR9145A(0~60)MPa PR9145B(0~100)MPa |
| Regulating Fineness | 10Pa | 10Pa | 0.1kPa | 0.1kPa | 0.1kPa |
| Working Medium | Air | Air | Transformer oil | Mixed liquid | Purified water |
| Pressure Connection | M20×1.5(3pcs) | M20×1.5(2pcs) | M20×1.5(3pcs) | M20×1.5(3pcs) | M20×1.5(3pcs) |
| External Dimensions | 430mm×360mm ×190mm | 540mm×290mm ×170mm | 490mm×400mm×1 90mm | 500mm×300mm×26 0mm | 490mm×400mm×190m m |
| Weight | 11kg | 7.7kg | 15kg | 14kg | 15kg |
| Operating Environment | Laboratories | | | | |

① When the ambient atmospheric pressure is 100kPa.a.(a : Absolute)