

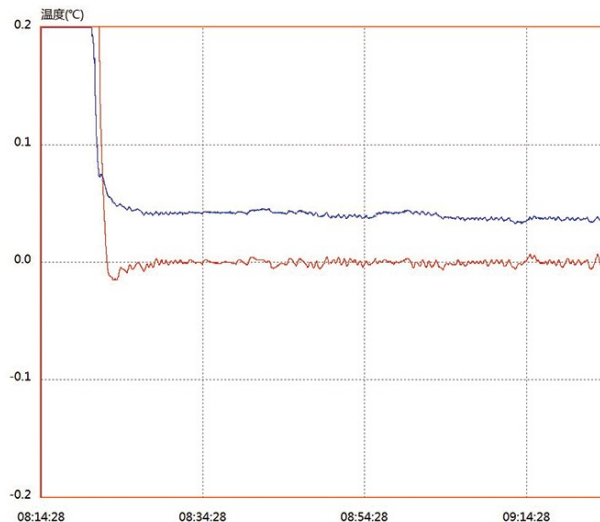
PR540 Series Ice-Point Reference Dry-Well

Copyright © Shandong PANRAN Instrument Group Co., Ltd.

PANRAN



PR540 Series Ice-Point Reference Dry-Well is an excellent fixed-point temperature device. It can provide a stable and precise reference junction thermostatic environment for extended periods during the verification and calibration of noble or base metal thermocouples. As an ideal replacement for traditional ice point devices, it is the preferred equipment for conducting thermocouple verification and calibration work.



▲ Temperature Control Curve

(Blue represents the power curve, red represents the temperature curve)

PANRAN instruments are available in South Africa from Intercal (Pty) Ltd

sales@intercal.co.za

www.intercal.co.za

+27 11 315 432

I. Product Features

■ Excellent Temperature Stability

Maintains a consistent 0°C environment for extended periods, impervious to external environmental fluctuations. The built-in temperature control system of the PR540 Series exhibits an annual variation of less than 0.03°C and features an ambient temperature compensation algorithm for real-time correction of the working cavity temperature.

■ Rapid Cooling

Achieves a peak cooling rate of 6°C/minute, stabilizing to the verification-required 0°C point in just 15 minutes from room temperature.

■ Insulated Jacks

Model B feature 0.5mm-thick insulation layers on the inner walls and bottoms of the jacks, enabling direct insertion of bare metal wires without additional insulation measures.

■ Manual Adjustment of Temperature Correction Values is Supported.

The temperature correction values can be manually adjusted via mechanical buttons.

II. Technical Parameters

Item\Model	PR540A	PR540B	Remark
Hole Dimensions	φ8mm×7pcs	φ4mm×10pcs+φ8mm×1pc	Insertion Depth: 200mm
Display Resolution	0.001°C		
Accuracy	0°C±0.03°C		Any test hole
Max Temperature Difference Between Holes	0.01°C		
Temperature Fluctuation	0.02°C/10 minutes		Ambient temp: 10°C~35°C
Temperature Stability	0.04°C/5h		Ambient temp: 23°C±5°C
Maximum Cooling Rate	6°C/minute		
Operating Environment	10°C~35°C, Non-condensing		
External Dimensions	320 mm×120mm×370mm		
Weight	8.5kg		

PANRAN instruments are available in South Africa from Intercal (Pty) Ltd

sales@intercal.co.za

www.intercal.co.za

+27 11 315 432

Power	300W	
-------	------	--